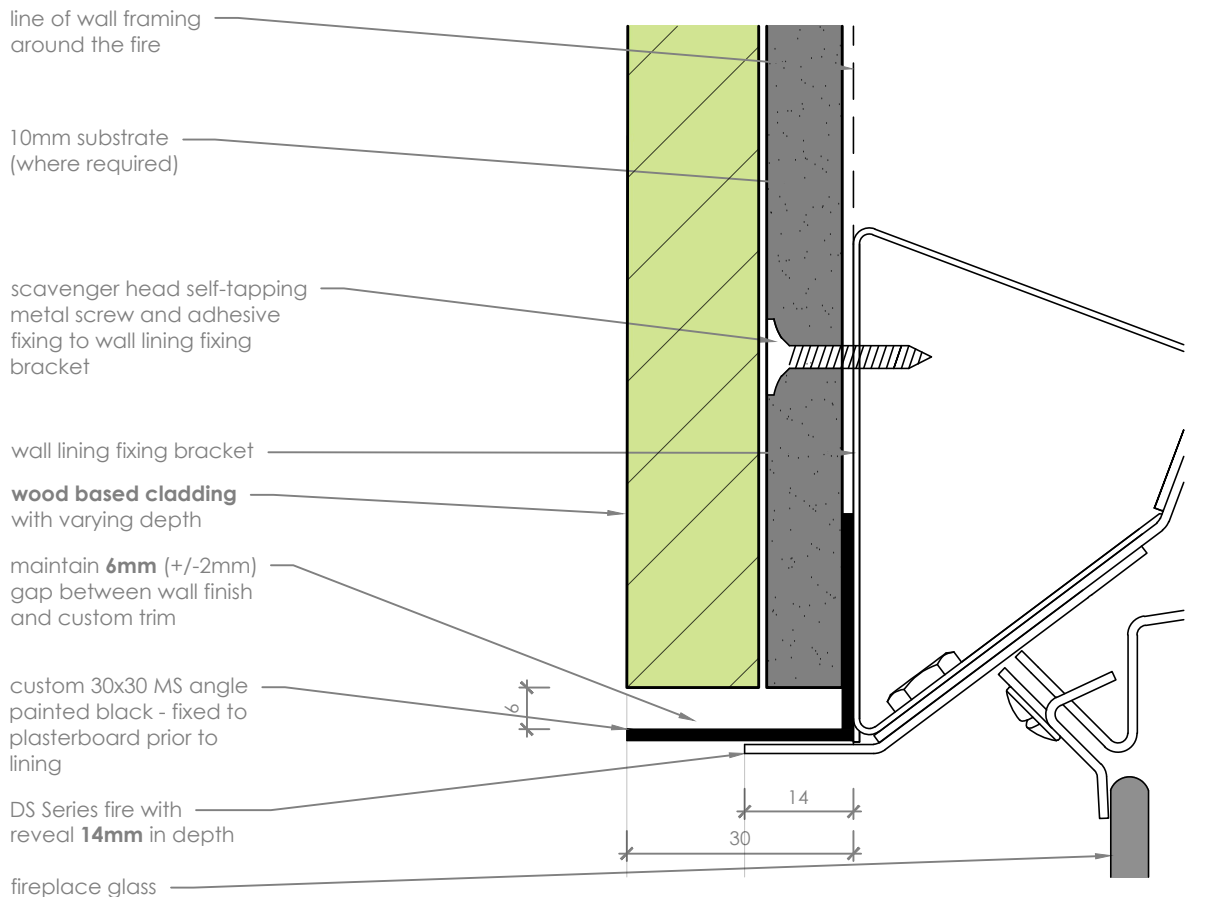


**Prolonged unprotected exposure to heat may be detrimental to the appearance or long term performance of a wall lining. Combustible and heat sensitive wall linings or finishes must not protrude past the trim, to the glass viewing area. Some scenarios will require the use of 22mm DS Extended Trim Kit, or a custom solution, to provide adequate protection.**



**Custom L-Angle**

scale 1:1

**Notes:**

- All dimensions are in mm. DO NOT SCALE OFF THESE DRAWINGS
- This detail is to assist in the installation of a **frameless finish** to a DS1150, DS1400, DS1650 or DS1900 Gas Fireplace.
- This detail is suitable for all four sides of the fireplace glass viewing area.
- Escea recommends when using these finishing methods that a **10mm substrate** is used.
- The Black MS Angle is to protect the hardwood cladding (e.g. Hardwood/Cedar/Fluted Panels) from direct heat from the fire. Prolonged unprotected exposure to heat will affect the cladding.
- Black fireplace reveals must be able to be removed - ensure any adhesive or compound is kept clear.
- This technical sheet must be read in conjunction with the Escea DS Series Installation Manual, the latest version can be found on our website at [www.escea.com](http://www.escea.com).

GENERAL CONSTRUCTION AND FINISHES SHOWN INDICATIVE ONLY

Contact the ESCEA Architectural Advisory Team for assistance with the specification of this fire - [aa@escea.com](mailto:aa@escea.com)