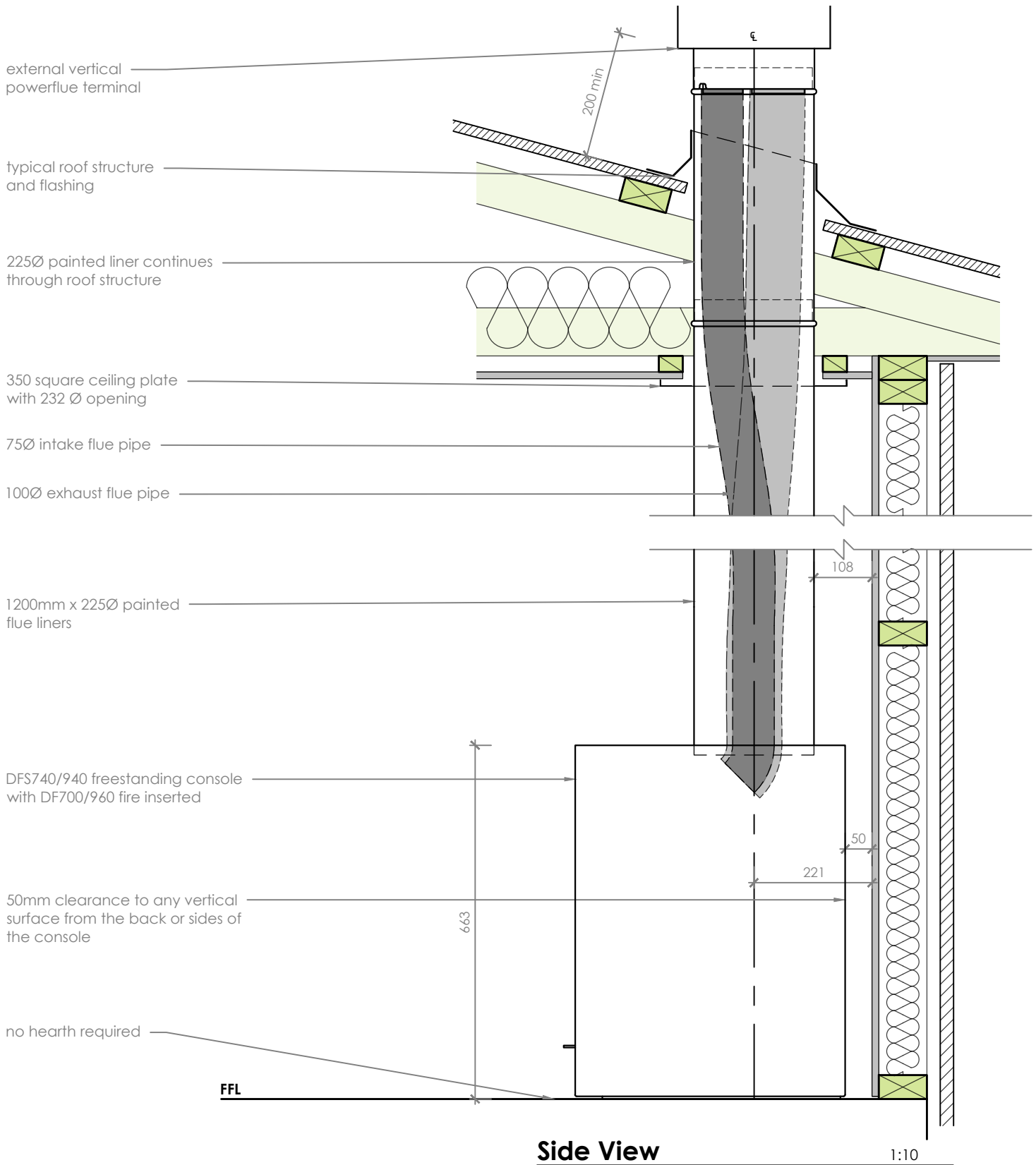


DFS740/940 - Vertical Powerflue Install



Notes:

- All dimensions are in mm. DO NOT SCALE OFF THESE DRAWINGS.
- This detail sheet is for the installation of a **DFS740/940 Gas Fireplace** using a Vertical Powerflue Kit.
- Consider space allowance for the installation of gas, electrical and network fittings.
- For flue detailing refer to the requisite Vertical Flue Technical Detail, which can be found at www.escea.com
- This technical sheet must be read in conjunction with the DF Series Installation Manual, the latest version can be found on our website at www.escea.com

GENERAL CONSTRUCTION AND FINISHES SHOWN INDICATIVE ONLY

Contact the ESCEA Architectural Advisory Team for assistance with the specification of this fire - aa@escea.com