

Cylinder Cowl - Outer

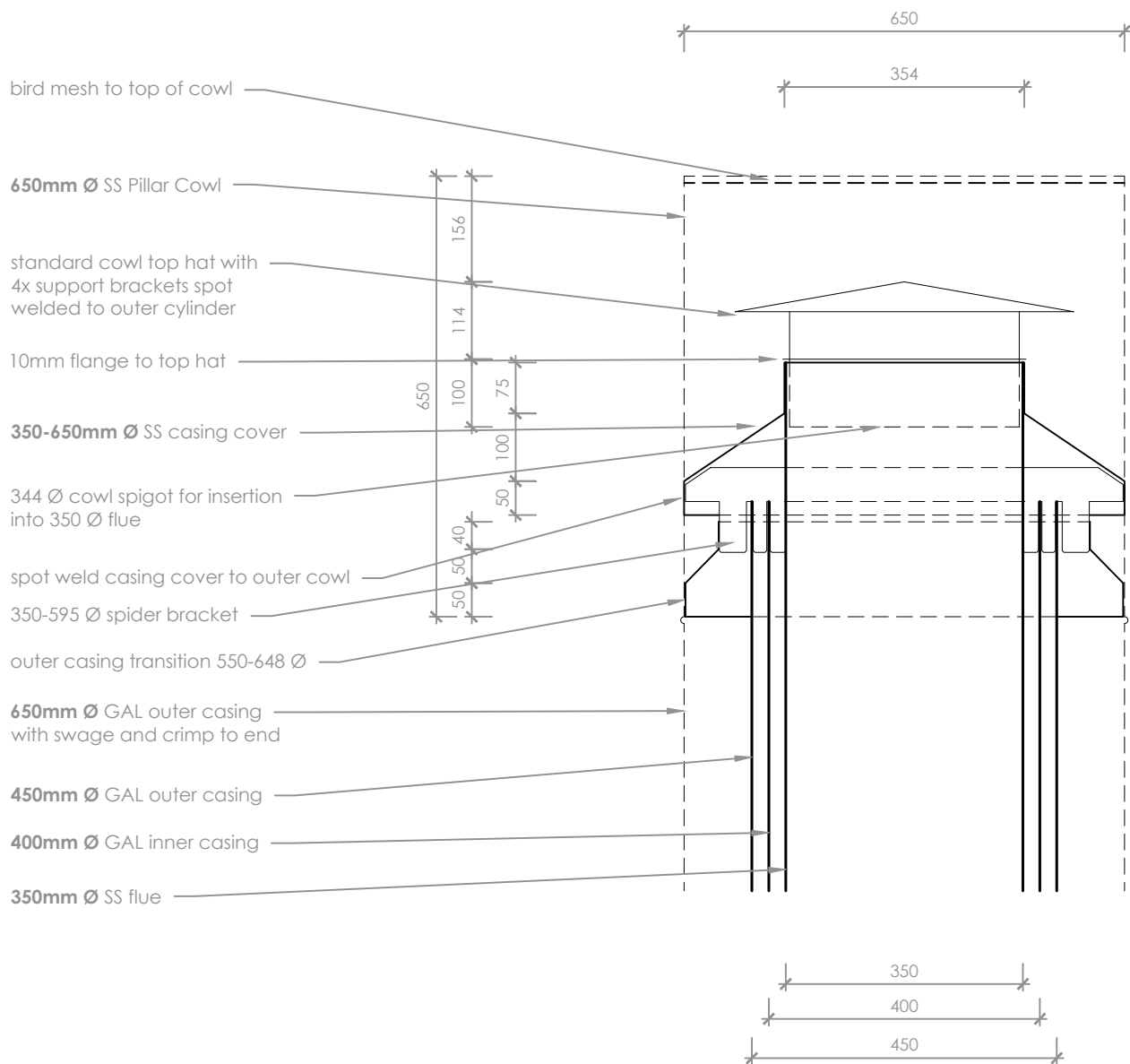
1:10

Notes:

- All dimensions are in mm. DO NOT SCALE OFF THESE DRAWINGS.
- This detail sheet is to assist in the design of a Cylinder Cowl for an **EK Series Outdoor Fireplace**. This is a custom product not manufactured by Escea. Two cowls are required for EK1550.
- Protect the appliance and flue from damage during installation.
- Follow the manufacturer's instructions for specifying and installing wall claddings, finishes and AAC Panels.
- The Specifier and/or Installer are responsible for compliance with all relevant Building Codes.
- This technical sheet must be read in conjunction with the EK Series Installation Manual, the latest version can be found on our website at www.escea.com

GENERAL CONSTRUCTION AND FINISHES SHOWN INDICATIVE ONLY

Contact the ESCEA Architectural Advisory Team for assistance with the specification of this fire - aa@escea.com



Cylinder Cowl - Inner

1:10

Notes:

- All dimensions are in mm. DO NOT SCALE OFF THESE DRAWINGS.
- This detail sheet is to assist in the design of a Cylinder Cowl for an **EK Series Outdoor Fireplace**. This is a custom product not manufactured by Escea. Two cowls are required for EK1550.
- Protect the appliance and flue from damage during installation.
- Follow the manufacturer's instructions for specifying and installing wall claddings, finishes and AAC Panels.
- The Specifier and/or Installer are responsible for compliance with all relevant Building Codes.
- This technical sheet must be read in conjunction with the EK Series Installation Manual, the latest version can be found on our website at www.escea.com

GENERAL CONSTRUCTION AND FINISHES SHOWN INDICATIVE ONLY

Contact the ESCEA Architectural Advisory Team for assistance with the specification of this fire - aa@escea.com